

Sturminster Marshall Memorial Hall

# Sturminster Marshall Public Meeting

26 March 2026

Julian Okoye MBA CEng MIET  
Infrastructure and Environmental Engagement Lead

**Wessex Water**  
YTL GROUP



# A deeply distressing and difficult time



I am **greatly concerned** about what may have polluted our land.

**Please can you help?** We really need your support and assistance with this.

Our neighbour's have recently alerted me to **potential sewage leaks** that has caused damage to their property.

# Drains backing up – gardens flooded



Drains backed up with sewage coming up in our front garden. Wessex water have been out and said there is nothing that they can do but wait for it to go down in the drain and to call when it floods over again.

Sewage from the road is pooling heavily on our land

I called to report sewage had spilled out onto our lawn. I have a dog, cat and child living at home.

# Frustration



This is **not the first time** this has happened.

# Agenda

What?

Why?

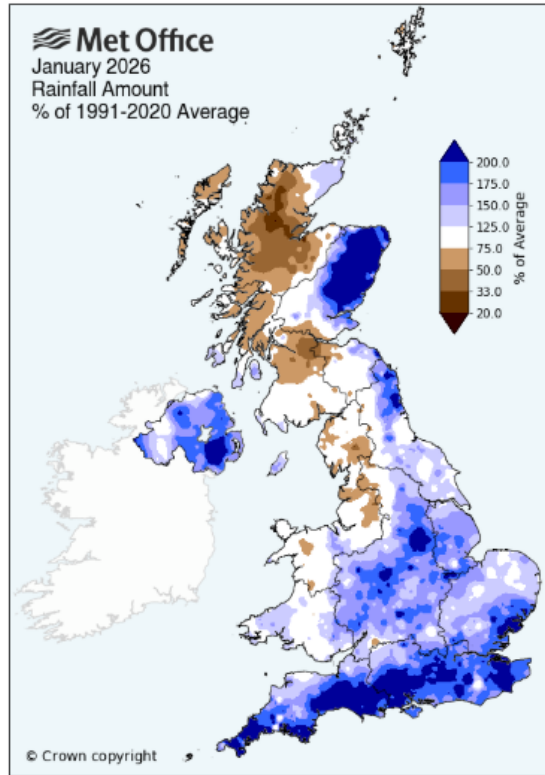
How?

When?

**What happened?**

# Exceptional weather conditions

## Dorset and Wiltshire Groundwater Incident Response 2026



It has been the wettest January for a lot of catchments across Dorset and Wiltshire, with the Middle Stour recording the wettest January since records began in 1891. We continued to see unsettled weather throughout February with all catchments across Dorset and Wiltshire recording over double the average rainfall.

Following heavy rain from Storm Chandra (26th to 27th Jan 2026), groundwater levels rose sharply across the Dorset and Wiltshire area, causing flooding to homes, businesses and roads networks. These levels were as high, and in some places higher, than the 2013/2014 levels that caused widespread flooding. We also saw groundwater impacts for communities that we have not seen before.

Whilst there are Groundwater Flood Warnings in force across Wessex, we will have this page live for additional information and guidance. To find out more about groundwater flooding and how it occurs, take a look at these videos: [What is Groundwater?](#); [Groundwater Animation](#)

High groundwater levels also raise water levels in rivers and streams which makes them more reactive to rainfall. You can find the latest Flood Warnings here:

[www.gov.uk/check-flooding](http://www.gov.uk/check-flooding)

Wettest January  
since records began  
in 1891

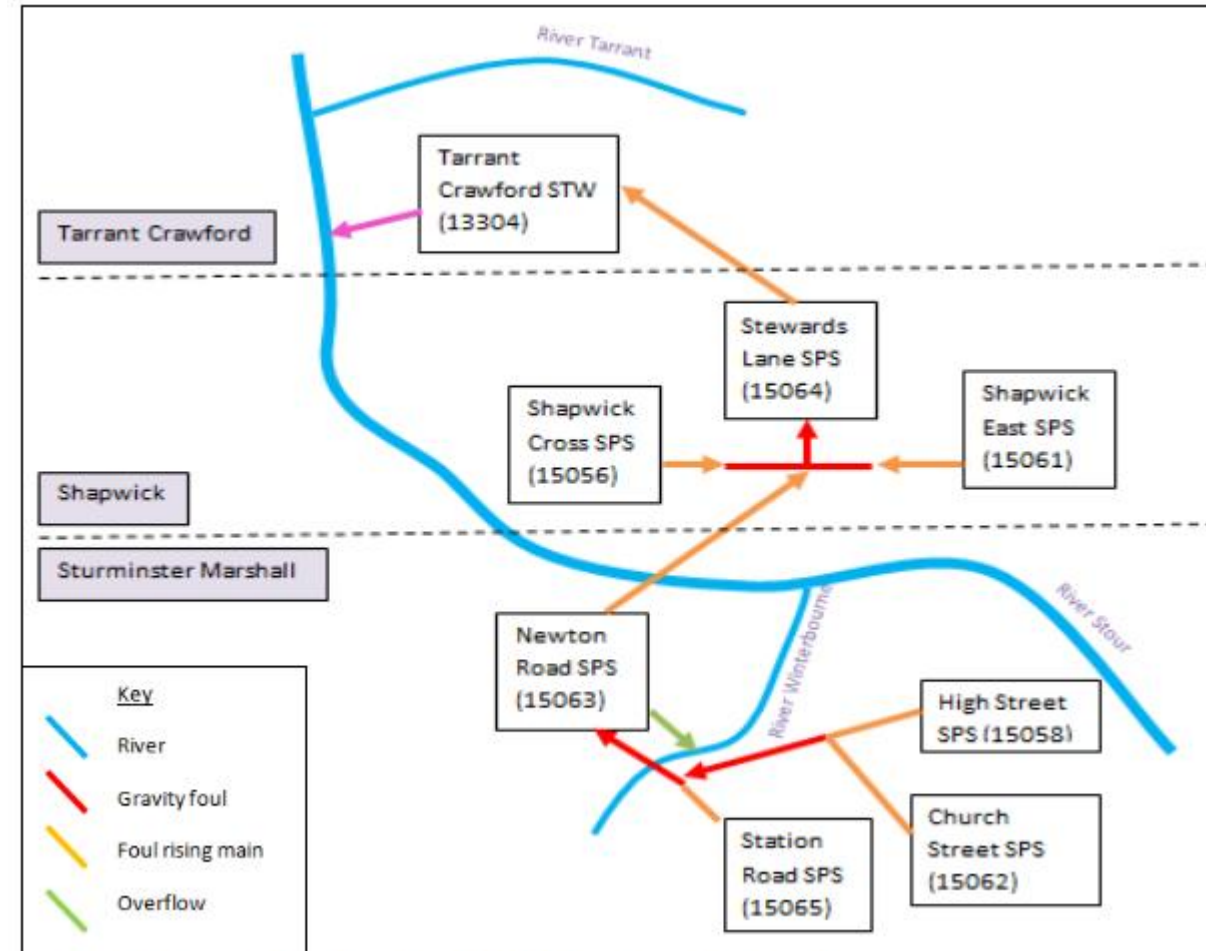
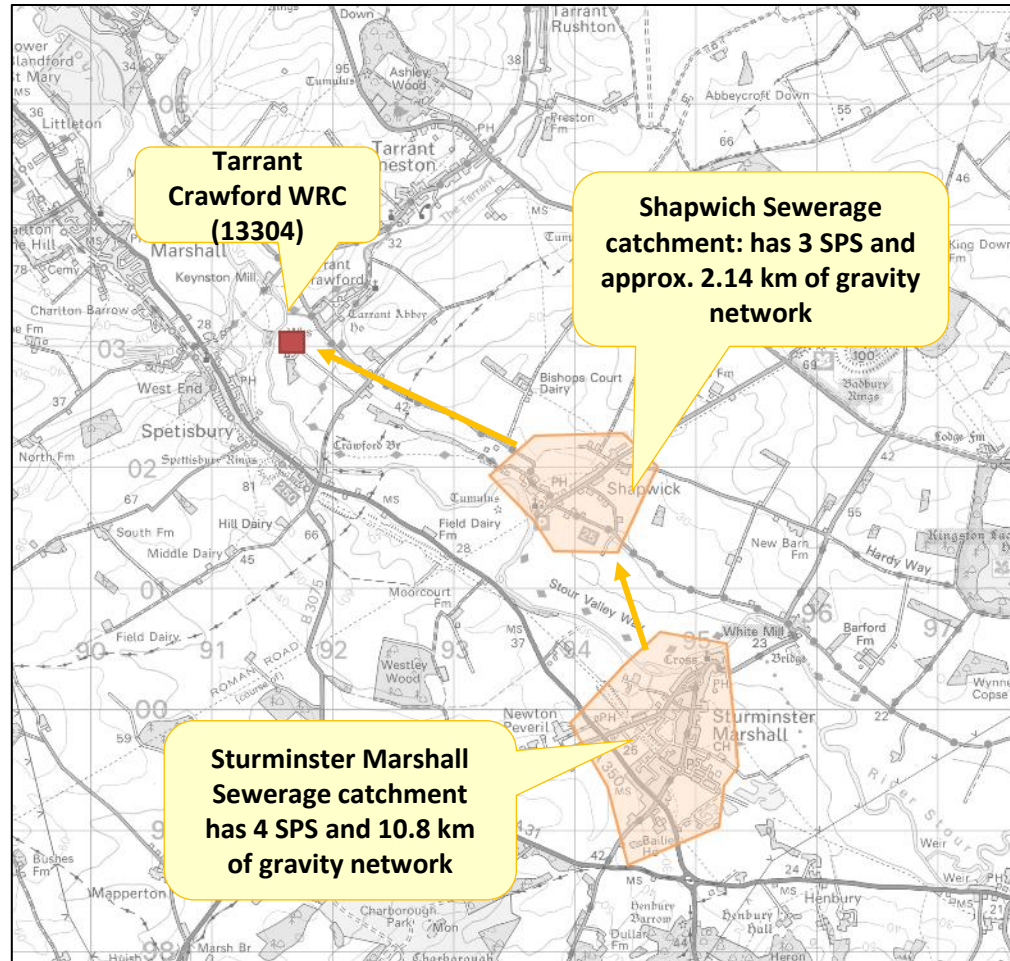
Flooding higher  
than 2013/14  
levels

Groundwater impacts  
for communities that  
haven't been seen  
before

[Dorset and Wiltshire Groundwater Incident Response](#)

**Why did this have such a big impact?**

# Understanding the system



## Surface water

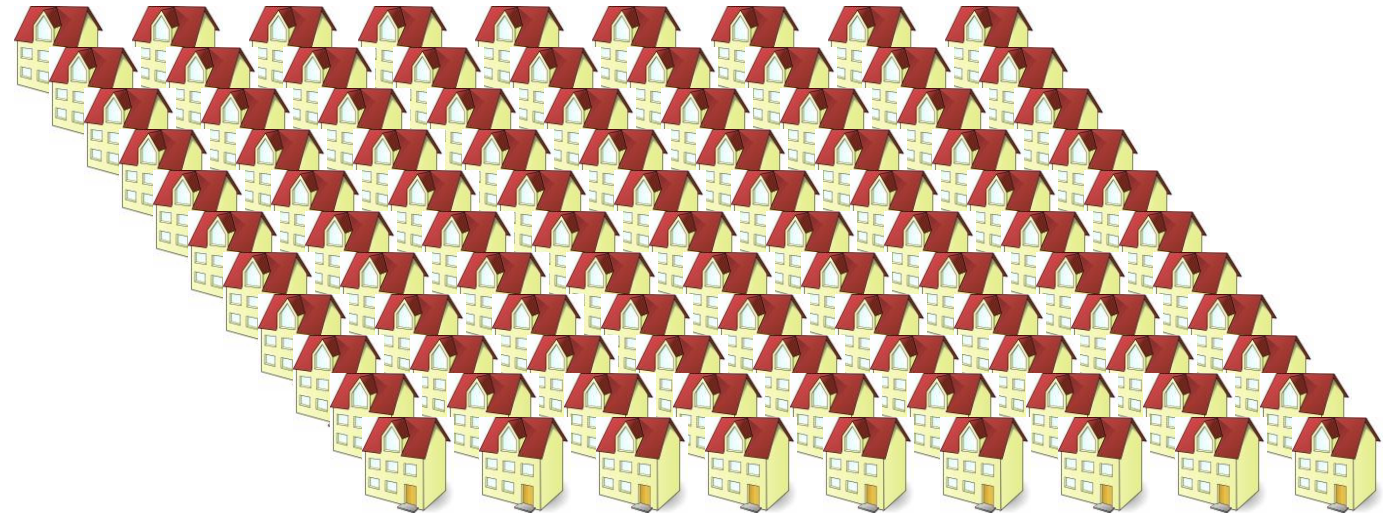
The flow generated by 1 average house roof in a heavy\* downpour



is equivalent to

## Foul water

The flow generated by 1 average house roof in a heavy downpour = the foul flow generated by 128 houses

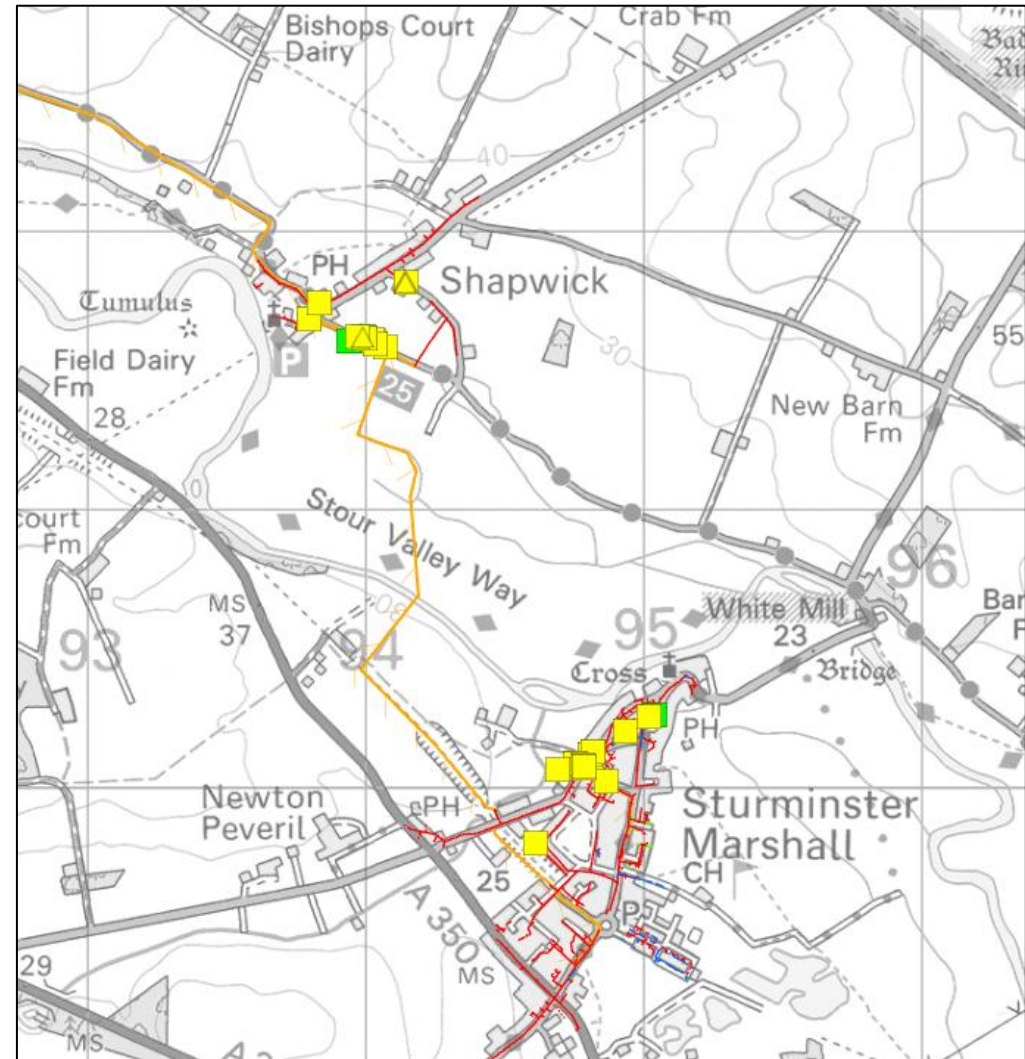


\*e.g. a 1 hour-duration 1-in-1 year rainfall event

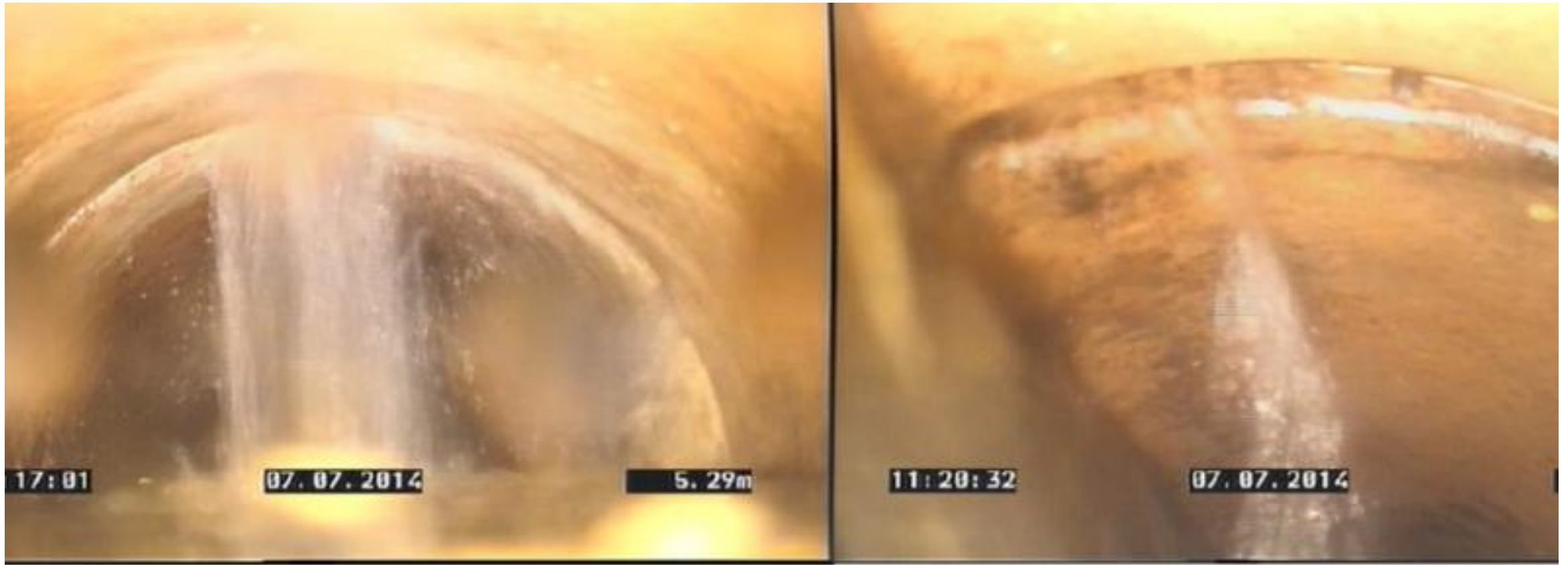
# Flooding incidents

	Sturminster Marshall		Shapwick	
	IHC	Blockage	IHC	Blockage
2020		3	6	
2021			8	
2022		1	4	
2023		5	7	6
2024		8	2	1
2025		1	7	1
2026		3	3	1

Flooding due to Insufficient Hydraulic Capacity (IHC) has been reviewed in the past. The root cause of the incidents was found to be the infiltration

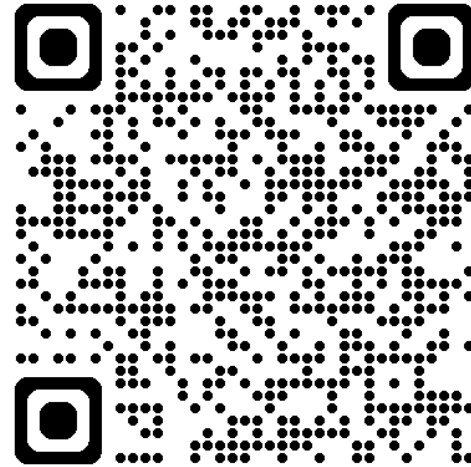


# Sewer Infiltration



# Explainer video

How groundwater causes sewer flooding



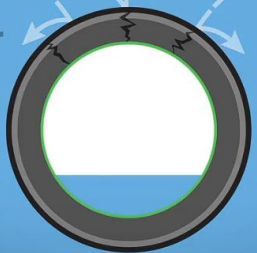
## Challenges of groundwater management



## What water companies can do

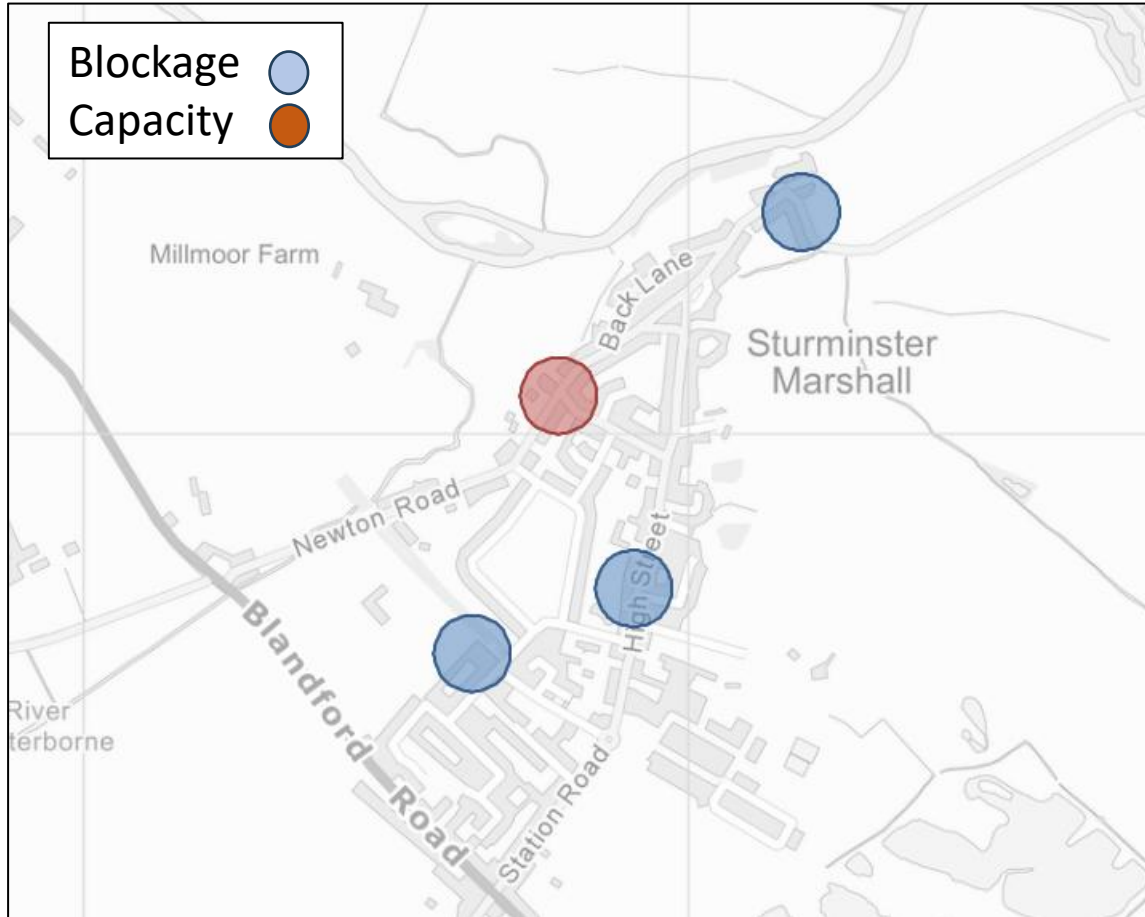
### Sealing public and private sewers and manholes

- Leaking sewer
- Liner inserted
- Liner heated



**How are we tackling this?**

# Where we are - 2025/26



## Strategic King Street scheme 2017

- Receives flow from 2 rising mains.
- Duplicated the receiving line to accommodate the flow.

## Operational Annual maintenance :

- 150 meter Nov 2025 (High Street)
- 63 meter June 2025 (Church Street)

## Evidence

- All SPSs high levels of ground water infiltration

# Survey and rehabilitation

Total CCTV inspection: 17 Km

Total sewer sealing: 6 Km

Financial Year	Length of sewer inspected (CCTV) - m	Length of sewer sealed - m
2000 / 01	1558	
2001 / 02	819	
2002 / 03		
2003 / 04		
2004 / 05		
2005 / 06		
2006 / 07	1748	936
2007 / 08	1412	1781
2008 / 09		
2009 / 10		
2010 / 11		
2011 / 12	338	
2012 / 13		
2013 / 14	2224	

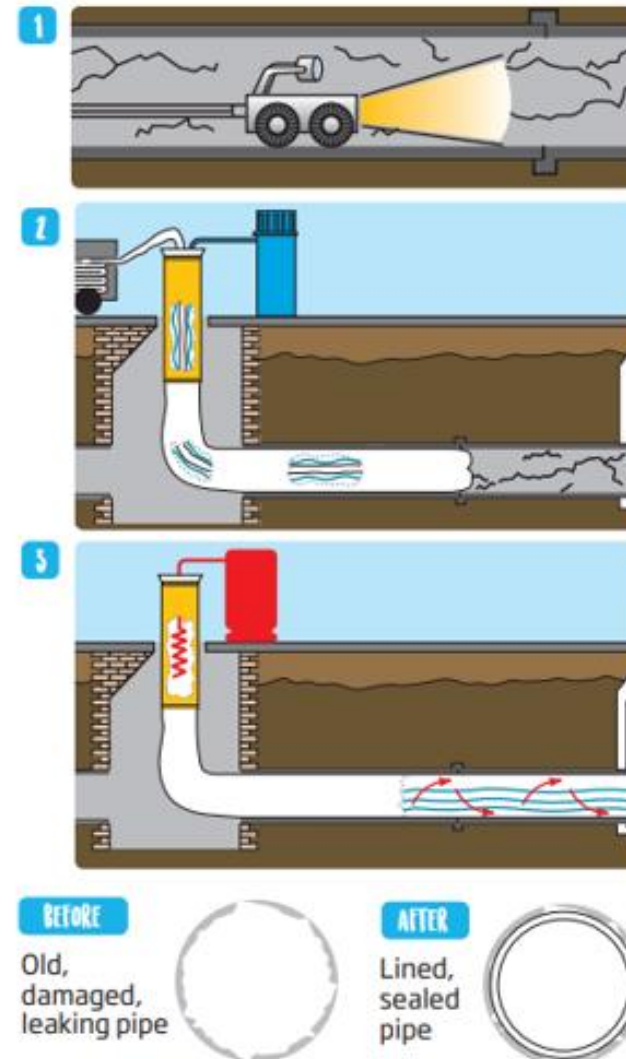
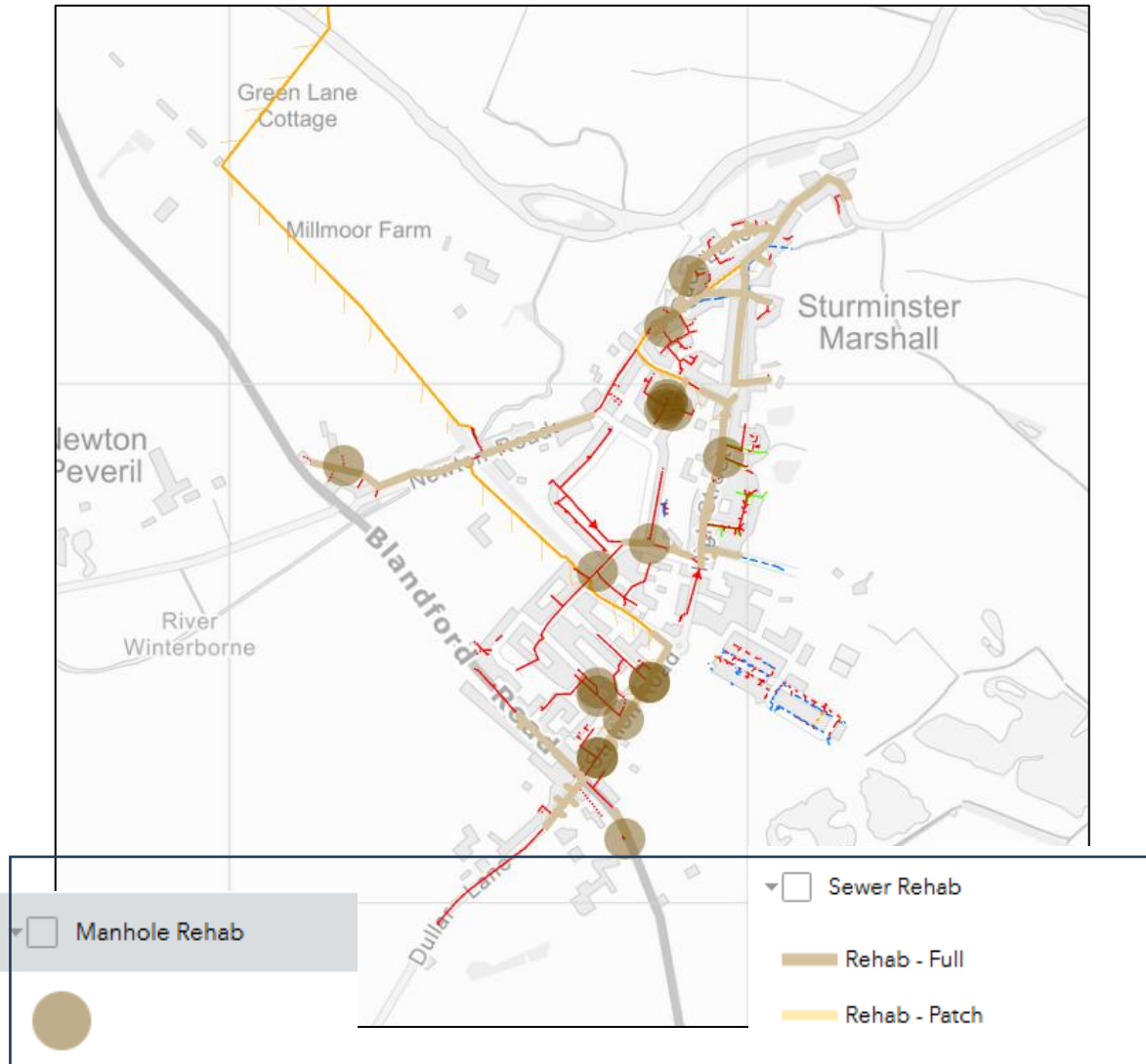
Financial Year	Length of sewer inspected (CCTV) - m	Length of sewer sealed - m
2014 / 15	701	2260
2015 / 16	889	
2016 / 17	985	
2017 / 18		
2018 / 19		
2019 / 20		
2020 / 21		
2021 / 22		
2022 / 23	5943	
2023 / 24		
2024 / 25		
2025 / 26	2,348 to date*	1216
2026 / 27		Design
2027 / 28		TBC
2028 / 29		TBC



\*Additional surveys completed Jan/Feb

Remedial work based on results of 2025/26 survey

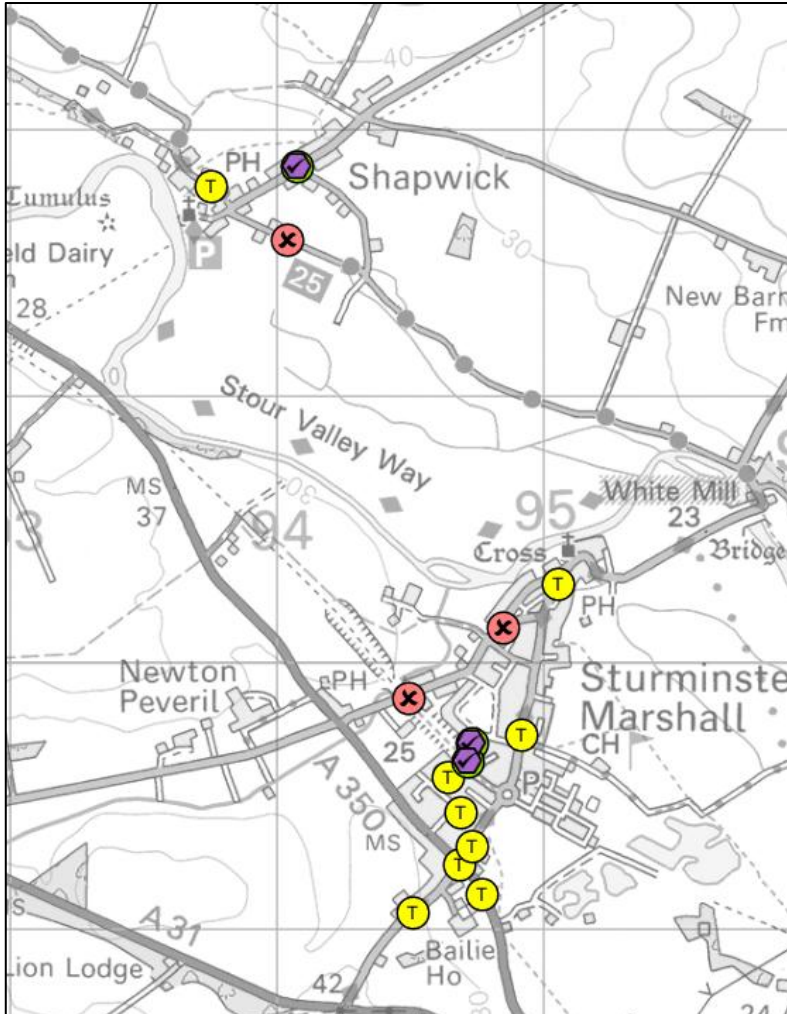
# Rehabilitation in the network



## Cured In Place Pipeline (CIPP) Lining Technique

- Quicker and less intrusive than excavation and replacement
- Liner impregnated resin
- Pushed through existing pipe using water or air pressure
- Cured in place with hot water or steam.

# Creating more intelligent sewers



## Sewer Level Monitoring Installation

- Better understanding of the network
- Identify where clear flow entering the sewage network.

### 15 targeted locations:

3 Monitors successfully installed

3 Failed installation

- lack of signal,
- too turbulent flow
- surcharged network

9 more are due to be installed

# Next steps

**2026**

**CCTV Investigations &  
Sewer Sealing Design**

**2026**

**Sewer Level Monitoring  
Programme**

**2026**

**Impermeable Area Survey  
Identify surface water inflow**

**2027**

**Sewer Sealing**

**2027**

**Surface water  
disconnections**

**2028**

**Sewer Sealing**

# How we can continue working together

Report  
it

Let's keep  
talking

**Thank you**

**Wessex Water**  
YTL GROUP

